

Montsalvat

Annual Report 2013/2014



Contents

| | |
|-----------|---|
| 2 | Mission |
| 3 | Chair's Report |
| 6 | Executive Director's Report |
| 7 | Cultural Operations |
| 9 | Onsite Arts Tradition |
| 11 | Heritage, Community & Tourism Operations |
| 12 | Development <ul style="list-style-type: none">Montsalvat FoundationMontsalvat Partnerships |
| 14 | Governance <ul style="list-style-type: none">Board PatronArts Advisory Board |
| 16 | Staff & Volunteers |
| 18 | Financial Statements |



Image: Winter Solstice Celebration @ Montsalvat 2014
© Field of Vision Photography

Mission



Montsalvat's mission is to continue to be a 'living, thriving, creative artistic community.'

Welcoming to the general public, we aim to educate and promote local, national and international cultural practice.'

Image: Montsalvat Open Day
© Kerry Cross



Chair's Report

THE BOARD

The Board of Montsalvat Ltd has continued to operate at full strength (with nine members, in accordance with its Constitution) throughout 2013–2014.

When Phillip Adams AO retired from the Board in 2013 after decades of service to Montsalvat, both as a Trustee and as a Member of the Board, Rob Hauser was nominated (by Phillip) for Board membership and elected unanimously at the October 2103 Annual General Meeting.

Maintaining connections - Former Board members and now patrons of Montsalvat, Phillip Adams AO and Dr Barry Jones AC, have kept a lively connection with Montsalvat, and the Chair thanks them both for their ongoing interest and practical assistance.

Thank you - The Chair is also very grateful to members of the Board for the generous and consistent way in which they volunteer their time and expertise. Montsalvat has had frequent occasion to seek their advice on architectural, arts, heritage,

administrative, financial and historical matters over the past twelve months, and their response has been rapid, independent, informed and of invaluable assistance to the Chair, management and staff.

BOARD MEETINGS

In 2013-2014 Montsalvat continued its practice of holding five Board meetings over the course of the year, with an Annual General Meeting in October. Increasingly, given Board member's travel commitments, some Board and Committee business is conducted electronically between meetings as the need arises. Again, the Chair is particularly grateful to those Board members who have made themselves available by phone or Skype from faraway places in order to expedite Montsalvat matters.

COMMITTEES

The work of the Board Committees has continued to expand in parallel with the development of Montsalvat's programs and projects. The Governance Committee is chaired by John Howie, the Finance Committee by Dr Catherine Dale, and

the Fundraising Committee by Peter Moore.

All Committees follow formal terms of reference, approved by the Board. They meet regularly between Board meetings, oversee the progress of programs, monitor governance policies and procedures, inject ideas, and keep an eye on costs. Committee chairs report regularly to the Board, both between and at meetings.

MONTSALVAT'S ORGANISATIONAL STRUCTURE

In February 2014, the Board approved changes to Montsalvat's organisational structure, including the creation of a new Executive Director position, a role filled by Montsalvat's Rob Hauser (Montsalvat's CEO from 2009 to 2014). The Executive Directorship is a Board position, comprising two sets of responsibilities:

- Board and Company Secretary (voluntary)
- Management of major development projects (paid).

The Executive Director works in close cooperation with Montsalvat's new

General Manger, Anthony Aspridis (appointed 4 March 2014). The re-organisation of roles has freed Rob Hauser to focus on major projects, while ensuring a rich induction period for Anthony Aspridis.

The Chair thanks our Executive Director and General Manager for the wholehearted and effective way in which they have embraced their new roles and worked together, bringing new energy and opportunities to Montsalvat.

GOVERNANCE

In May 2014 the Board unanimously approved a revised (from 2009) Governance Plan and Code of Conduct. The Plan was revised after input, at a specially convened Board session, from Tony Lang, Melbourne barrister and governance expert. The Plan follows current models of best governance practice for not-for profit organisations, and conforms to the requirements and recommendations of relevant government authorities and funding bodies.

MONTSALVAT'S ARTS PROGRAMS

Since her appointment in 2012, Montsalvat's Arts Manager, Jeannette Davison, ably assisted by Simonette Turner, has extended Montsalvat's exhibition programs, opened up new galleries for exhibition, expanded arts education opportunities for both adults and children, and has overseen successful community events, including the Spring Open Day, which attracts large crowds to Montsalvat, showcases the work of our artists, and helps build and extend links with the local community, arts bodies and practitioners throughout Australia.

Jeannette Davison has also forged institutional connections for Montsalvat, with arts colleges, schools, funding bodies, university arts and curatorial departments. Through her initiatives, Montsalvat has been able to secure the voluntary services of University of Melbourne curator, Debbie Robinson, to photograph and catalogue Montsalvat's collection of work by

“Montsalvat is cherished by our artists, who, in its studios, make work to delight & stretch our imaginations.”

at the Museums Victoria Victorian Collections site. It can now be accessed by students, scholars and the general public. She is also working with another qualified curator, Andrea Campbell, to prepare an exhibition of works by Justus Jørgensen and artists associated with Montsalvat over its long history.

Volunteers are essential to Montsalvat, and much valued – as guides, docents in our galleries, and as informed participants in our Open Days and events. Jeannette and Simonette are building an expanding band of volunteers to help spread the word about Montsalvat, and at the same time to help care for our collections, exhibits, and buildings. Montsalvat's wonderful general staff are essential partners in all these endeavours. They are able, enthusiastic and tireless. We thank them all.

THE WINTER SOLSTICE

In June 2014 Montsalvat again celebrated the shortest day with a grand lantern parade and spectacular bonfire. 3500 people (plus the fire brigade and St John's ambulance) attended this hugely popular community and family event. The bonfire (lit by a rider on horseback) was designed and executed by Macgregor Knox and his team. The lanterns were constructed by Lachlan Plain, in workshops with local children conducted over a period of some weeks before the bonfire. The event was coordinated (without a mishap or a lost child) by Montsalvat's Ringmaster/General Manager, Anthony Aspridis and his grand band of staff and volunteers – a high wire act, perfectly executed.

PHILANTHROPY AT HOME

In a continuing tradition, a number of Montsalvat's major exhibitions, concerts, recitals and events in 2013–2014 were made possible through the generous support of individual donors and patrons, and through the willingness of visiting artists and curators to share their work and expertise. My thanks to them all.

CELEBRATING INDIGENOUS CULTURE

In July 2013 Montsalvat hosted and organised the PAST MATTERS festival, a celebration of Australian Indigenous writing, history and culture, in cooperation with the Nillumbik Reconciliation Group, University of Melbourne's Australian Indigenous Studies (AIS) Department, Nillumbik Council, Eltham Bookshop and *Australian Book Review*. Speakers included Alexis Wright, winner of the Miles Franklin Literary award; ANU Cultural historian Dr Martin Thomas; novelist Tony Birch; AIS Academic Coordinator Philip Morrissey and AIS Project Kate Leah Rendell; AIS honours research students Fiannuala Morgan, John Morrissey, Jon Ricketson and James Burgman-Milner; Martin Butler, director of the ABC's award-winning series 'First Footprints' and Morag Fraser. The festival, held over an evening and a full day (in Montsalvat's Great Hall), was fully subscribed and will be repeated in 2015.

INSTITUTIONAL ASSOCIATIONS

Montsalvat, through its Board, and its arts and events staff, continues to strengthen connections with local, state and federal governments, with the ever-helpful Nillumbik Council,

education institutions, business, associations and cultural groups. We enjoy an ongoing and productive relationship with our neighbour, the Eltham Cemetery Trust, and, through Arts Manager Jeannette Davison's efforts, we have developed creative links with schools, tertiary institutions and community groups in our region and beyond.

CONCLUSION

Montsalvat's beauty, rich artistic history and architectural heritage are enjoyed by many people. Montsalvat is cherished by our artists, who, in its studios, make work to delight and stretch our imaginations. It is loved by the public, who come here to wander, to celebrate, or sometimes to mourn in a setting fit for their yearnings. It is enjoyed by tourists from many countries. It is also committed to educating students, visitors and everyone who enters its gates about art in all its forms, and about the dynamic role art plays in a community.

I thank Montsalvat's Executive Director, Rob Hauser, for his commitment to Montsalvat's vision for art and its place in our society. I think him also for his patient and skilled work in keeping Montsalvat lively, financially secure, safe for all comers, and looking towards the future.

Rob Hauser's dedication is mirrored in the sterling and collaborative work of Montsalvat's General Manager, Anthony Aspridis, Arts Manager Jeannette Davison, Gardens Manager Jo Douglas, and by their splendid staff and volunteers. Together, they all do the community a great service by caring for a remarkable institution and ensuring that it will still be here to engage and delight future generations.

MORAG FRASER
CHAIR, MONTSALVAT LTD



Images, T-B: Chapel Pond © Jo Douglas,
Choral@Montsalvat Festival,
Michael Schlitz, *Woodcut Prints*



Executive Director's Report

2013/2014 was a very successful and significant year for Montsalvat.

Financially, Montsalvat Ltd made a profit for the seventh consecutive year. Montsalvat has now operated profitably every year since the formation of Montsalvat Ltd, with its independent Board, in 2006. Montsalvat Ltd is a not-for-profit company and all profits are used to benefit Montsalvat directly, particularly through capital works.

Montsalvat's mission is to continue to be a living, thriving, creative artistic community. During the year, Montsalvat delivered an extensive arts program, comprised of high quality exhibitions, concerts, artist talks and literary events. The highlights of this program included the Rick Amor Portrait Prize, the Nillumbik Prize, the 'Expressions of Self' Ceramic Exhibition curated by Anna Maas of Skepsi Gallery, and the highly successful 'Soundings' exhibition by Montsalvat artists.

Montsalvat now has over 20 artists who make, create and teach art at Montsalvat. They include jewellers, painters, violin, guitar and shakuhachi flute makers, glass sculptors, ceramic artists, musicians and filmmakers. The artistic community is made up of a large number of artists who variously practice at Montsalvat, visit as artists in residence or exhibit and perform at Montsalvat.

Montsalvat's mission is also being achieved through the planning and development of centres for teaching in glass, ceramics and music. These will complement existing arts education programs provided by the Montsalvat Painting School, Jeanette Dyke's Jewellery School and Chris Wynne's guitar-making and luthier courses.

Organisational changes during the year resulted in the appointment of Anthony Aspridis as General Manager. Anthony has embraced his role with great professionalism and enthusiasm. He is well respected and liked by staff, is very proactive and has already developed an excellent understanding of Montsalvat's artistic and business needs. He is making an invaluable contribution to Montsalvat.

Montsalvat's achievements during the year could not have occurred without the support of many people.

I thank all Board members, and particularly the Board Chair Morag Fraser, for their commitment to Montsalvat during the year. Morag Fraser has been Chair of Montsalvat since the formation of Montsalvat Ltd in 2006 and her outstanding leadership has been central to its success. The Board's focus on sound financial management, development of arts facilities, improved marketing, risk management and ensuring that

Montsalvat practices good governance has been vital to the ongoing success of Montsalvat. I also thank the staff of Montsalvat, who do an outstanding job with limited resources. Special thanks go to Arts Manager Jeannette Davison and Simonette Turner for their high quality and varied arts program; to Jo Douglas, who together with Allan Johansson and the volunteer team, has transformed Montsalvat's gardens; to Phoebe Meyer and Elysia Schultz for running functions that ensure Montsalvat's financial success; to Dean Warner and Veronica Dapiran for so ably maintaining and cleaning Montsalvat's buildings (and for much more besides), and to Petra Nicel, Christine Johnson, Rachael Ellis, Caty Gierer and Caitlin Boswell for their excellent work at reception and running the Montsalvat shop.

Finally, special thanks go to the vital work of volunteers who support Montsalvat in many ways, to the artists who live, work and teach at Montsalvat and to Montsalvat's patrons and partners. All of them help ensure that Montsalvat continues to be a lively and creative artistic community.

ROB HAUSER
EXECUTIVE DIRECTOR,
MONTSALVAT LTD



Cultural Operations

EXHIBITIONS

Barn Gallery

Nillumbik Prize 2014
Mixed Media

Skepsi@Montsalvat, *Expressions of Self*
Ceramics

Watercolour Society of Victoria
Painting

Rick Amor Self Portrait Prize
Painting

Michael Knight, *A Verbal Curtain*
Painting & Ceramics

Dale Cox
Painting

Montsalvat Studio Artists, *Soundings*
Mixed Media

Lindy Yeates, *Sacred Objects*
Mixed Media

Thou Art Mum, *Branching Out*
Mixed Media

Amanda Kennedy, *Pieces of me*
Painting

Residents Gallery

Debbie Robinson
Painting

Kate Hudson
Prints

Brigitte Haldemann, Maggie Osinga & Jacie Malseed,
Colourful Women
Textiles

Long Gallery

Eolo Paul Bottaro, *Paper Tales*
Painting

Nerina Lascelles, *Japonism*
Painting

NEAMI Splash, *Eclectic*
Mixed Media

Watercolour Society of Victoria
Painting

Vicki McInnes & Benita Davis, *True to Life*
Painting

Michael Schlitz, *Woodcut Prints*
Prints



Image, top: Rick Amor Self Portrait Prize Exhibition Opening
Image, bottom: Dale Cox, *Tract 48*, courtesy of Australian Galleries.

CONCERTS

Megan Reeve & Sarah Cole
Jan Martin
Wang Zheng-Ting & George Butrumlis
Ted Vining - *Oynsemble*
Stefan Cassomenos x 2
Jan Cook - Sandhill Music School
Alan Kogosowski
Kate Crowley - CD Launch, *Measured in Moons*
Choral@Montsalvat Festival

LITERARY EVENTS

Kate Ceberano - Book Launch, *I'm Talking*
Christine Durham - Book Launch, *Unlocking the Brain*
Michael Leunig - Book Launch, *Holy Fool*
the PAST MATTERS - Indigenous Literary & Cultural Festival



OPEN DAY - 15 September 2013

The Open Day included the following:

- Artist Open Studios
- Performances by Scrimshaw Four, Jenny Biddle, Opera Singers - Olivia Cranwell and Carlos Barcenas, Rachael and Friends, George Dreyfus, Loz and Larry.
- Land art workshops facilitated by Melissa Paine x 2
- Food vans - Traylor Made, Dee's Homemade Soups, Yarra Coffee, Matti's Felafel & Ghost Kitchen
- Yarn Bomb hunt
- Historic tours x 4

Around 1300 people attended on the day. It was widely regarded as very successful event.





Onsite Arts Tradition

Montsalvat continues to be a place where art is made. The work of our diverse range of artists was showcased in an exhibition titled 'Soundings', held in the Barn Gallery in April – May 2014. Community engagement with the exhibition was very strong, with 200 people attending the opening and hundreds of people viewing the exhibition throughout its run. The community is clearly interested in the creative output generated at Montsalvat.

MONTSALVAT ARTISTS

Amy Skipper
Couturier

Jo Ludbrook
Textiles

Angela Abbott
Painter & Teacher

Carole Moschetti
Painter & Musician

Chris Wynne
Luthier & Teacher

Damien Skipper
Artist

Daniela Miszkinis
Painter

David Brown
Luthier & Shakuhachi Flute-maker

David Moore
Painter & Teacher

Don James
Painter & Teacher

Jeanette Dyke
Jewellery Maker & Teacher

Mariella McKinley
Glass Artist

Richard Nelson
Film Maker

Ruth McCallum-Howell
Glass Artist

Sandy Kilpatrick
Jewellery Maker

Simon Baigent
Goldsmith

Susan Reddrop
Glass Artist

Timothy Clarkson
Ceramic Artist



Images, clockwise: Ruth McCallum-Howell & Susan Reddrop's studio; Timothy Clarkson's Studio; Jo Ludbrook & Sue Thomas. All photos © Kerry Cross.

NEW ARTISTS APPOINTED 2013/14

Varuni Kanagasundaram
Ceramic Artist

ARTISTS VACATING STUDIOS 2013/14

None

2013/14 ARTIST IN RESIDENCE PROGRAM

Our Artist In Residence (AIR) Program continues to attract artists from a wide range of arts practice. Depending upon the availability of the artist, we have offered three month stays in order to give artists a considerable amount of time to work on their project. In the case of Jeminah Alli Reidy we have agreed to a split residency, being six weeks in early 2014 and a further six weeks in early 2015. The first six weeks of Jemimah's residency were devoted to research, and it is proposed that the second part will allow for the organization of an installation event at Montsalvat. Flexibility with timing and duration of stays in this program has been very productive.

AIR PROGRAM ARTISTS

Lisa Nolan
Painter

Margaret Summerton & Robina Summers
Yarn Bombers

Wona Bae
Sculptor

Denise Keele-bedford
Installation Artist



Mirranda Burton
Printmaker

Jeminah Alli Reidy
Scenographer



Images, clockwise: Varuni Kanagasundaram, *Capture*; Jeminah Alli Reidy; sculpture in Montsalvat Grounds by Wona Bae; Denise Keele-bedford & Rachel Shield creating an installation for National Reconciliation Day 2014.



Heritage, Community & Tourism Operations

Montsalvat is a vital centre for the arts in our region. The dramatic increase in our visitor numbers (35,535 over the last twelve month period) indicates that the public's fascination with Montsalvat is on the increase. Two events, the Winter Solstice Bonfire and Open Day, added in excess of 4800 visitors to that total. The number attending the Bonfire and Open Day represented half of the total number of visitors for the previous year.

Visitors continue to enjoy learning about the history of Montsalvat through our tours, by viewing our many exhibitions and attending our concerts, literary events and arts education events.

Our strong association with the Nillumbik Shire Council continues to flourish. Two programs are funded and initiated by the council. They are the Nillumbik Prize and the Red Chair Event. The Nillumbik Prize is administered and hosted by Montsalvat and this year's prize attracted a total of 213 entries. The exhibition included 38 shortlisted works. Jason Smith, Director of Heide Museum of Art, graciously judged the

prize. The quality of both the works entered and the presentation of the exhibition (curated by Grace Longato) was of a very high standard. It is estimated that 300 people attended the exhibition opening. This exhibition is a regular highlight on our exhibitions calendar.

Through the Red Chair Event, local artists and art lovers have been inspired by eight presentations from well-known local Australian artists, including Moran Prize-winner, Peter Wegner. The artists' presentations provide insights into their process while the opportunity for conversations enhances and enriches community connections with art and artists.

In 2013 Montsalvat was the starting point for the Eltham Mud Brick Tour. This event is run in association with the Eltham High School. Funds raised go directly to the Eltham High School Music Program. On the day, the Barn Gallery was made available for performances by the music students from Eltham High School. Montsalvat is delighted to support the Eltham High School Music program in this way.

Widely regarded as a highlight in our events calendar, this year's Winter Solstice Bonfire attracted a record number of visitors. Run in association with Macgregor Knox, winner of the 2013 Nillumbik Prize, this event generates strong community involvement. Local artist Lachlan Plain ran lantern-making workshops prior to the event, and the lanterns produced provided a magnificent addition to a lantern parade as part of the Winter Solstice Bonfire. Local school-age children also participated in the lantern parade. A large proportion of attendees at the event were families from the local community.

Montsalvat is proud to support and showcase such art and artists from our local community.



Development

MONTSALVAT FOUNDATION

The Montsalvat Foundation was established to raise funding to promote and encourage the arts at Montsalvat by way of exhibitions, public concerts, lectures, workshops and master classes. The Foundation is endorsed as a Deductible Gift Recipient; therefore we are able to issue tax receipts for any donations. The formation of a Fundraising Committee of the Board and the establishment of the Patrons Program in 2012 resulted in a significant increase in the philanthropic funds received by Montsalvat.

Private donations totalling \$55,000 were received during the year.

The Patrons Program is currently supported by the following people:

Montsalvat

gratefully acknowledges supporters of its

Patrons Program

Gallery (\$10,000 or more)

Rick Amor
Dr Barbara van Ernst
Morag Fraser
Rob Hauser & Ruth Barr
Peter & Karen Moore

Salon (\$5,000–\$9,999)

Studio (\$2,000–\$4,999)
Siobhan Jackson

Workshop (\$250–\$1,999)

Morrison and Kleeman
Grant Sheldon
Dr Anthea Hyslop
Anonymous (1)
Eric Mack



MONTSSALVAT PARTNERSHIPS



Festive Fires

Mardi Sommerfeld - Macgregor Knox



Images, clockwise: Nillumbik Prize 2014 Exhibition Opening; Eltham Mudbrick Tour 2013; Flinders Quartet.



Governance



MONTSALVAT LIMITED BOARD

| | |
|-----------------------------------|--|
| Morag Fraser AM (Chair) | Writer, former editor of <i>Eureka Street</i> magazine Chair, <i>Australian Book Review</i> |
| John Howie | Lawyer |
| Phillip Adams AO | Australian broadcaster, film producer, writer & social commentator |
| Dr Catherine Dale | General Manager, Eurobodalla Shire Council Board Member, State Library of Victoria |
| Max Jörgensen | Company Director Farmer & inventor/developer of ideas |
| Sigmund Jörgensen OAM | Montsalvat Heritage & Arts Advisor |
| Peter Moore | Director, Flyford Communications |
| Allan Willingham | Conservation Architect |
| Dr John Wiltshire | Former Professor of English at La Trobe University |
| Robert Hauser | Montsalvat Executive Director Former CEO of Yarra Ranges Shire Council |

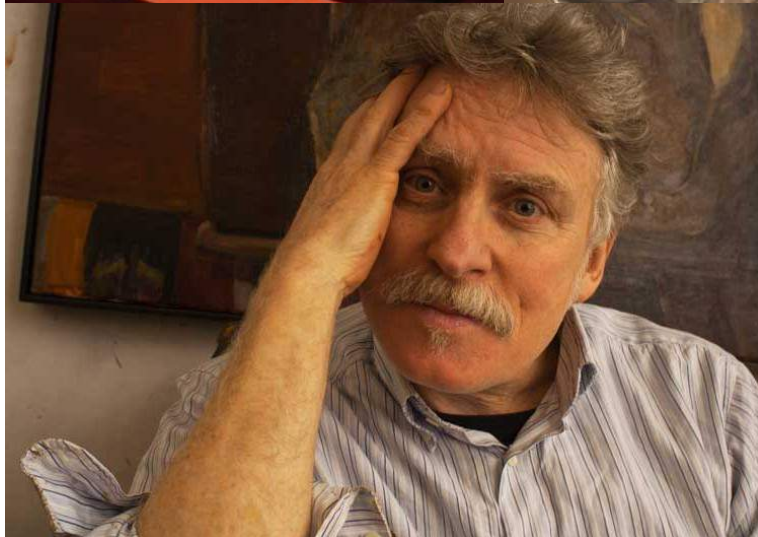
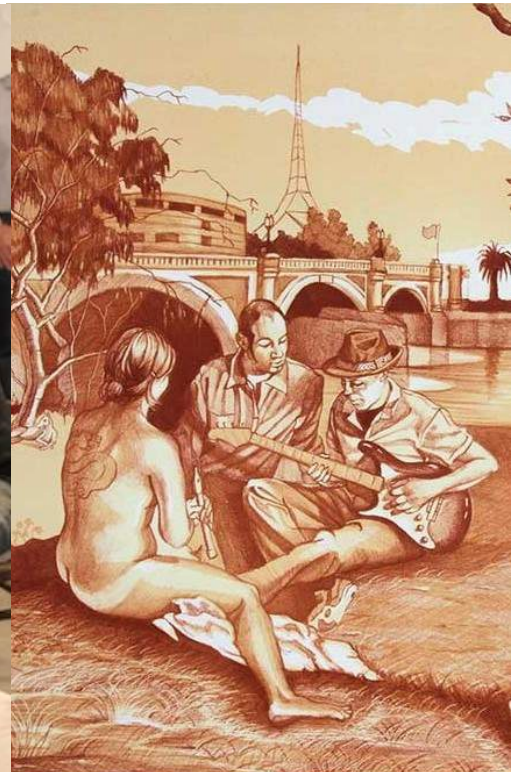
PATRONS

| | |
|-------------------------|--|
| Barry Jones AC | Professorial Fellow at the University of Melbourne Minister for Science in the Hawke Government Board Member of the Victorian Opera Listed by National Trust as an Australian Living Treasure |
| Phillip Adams AO | Australian broadcaster, film producer, writer & commentator |

ARTS ADVISORY BOARD

The artistic direction of Montsalvat is guided by its Arts Advisory Board, which is comprised of:

| | |
|------------------------------|--|
| Rick Amor | Artist, Winner of the 2007 McClelland Sculpture Prize |
| Tony Gould | Pianist/Composer, Winner of the 2009 Don Banks Music Award from the Australia Council for the Arts |
| Rodney Hall | Writer, twice Miles Franklin Winner Former Chair of the Australia Council for the Arts |
| Sigmund Jörgensen OAM | Montsalvat Limited Board Member |
| Genevieve Lacey | Recorder virtuoso & Artistic Director |
| Michael Shmith | Journalist, <i>Age</i> lead writer & reviewer |
| Peter Wegner | Artist, Winner of the 2006 Moran Portrait Prize |



Images, clockwise: Debbie Robinson, *Wonderstruck* (detail); Brian Keyte presenting a workshop in the Barn Gallery; Eolo Paul Bottaro, *Joyride* (detail); Wang Zheng-Ting playing the Sheng; Peter Wegner, Arts Advisor & Red Chair presenter.



STAFF

The staff of Montsalvat are committed to supporting its creative arts community, heritage buildings and grounds.

| | | | | |
|------------------------------------|--|---|--|--|
| Executive Director | Rob Hauser | | | |
| General Manager | Anthony Aspridis | | | |
| Arts Manager | Jeannette Davison | | | |
| Events Manager | Vennesza Soosai | | | |
| Events Manager - Operations | Elysia Schultz | | | |
| Events Coordinator | Paola Luz/Elysia Schultz | | | |
| Arts Support Coordinator | Simonette Turner/Sana Kojicin | | | |
| Special Projects Officer | Sana Kojicin | | | |
| Reception | Petra Nicel Rachael Ellis Christine Johnstone | Brodie Ellis Cathy Gierer Rachael Nolan | Fiona Boyd Simonette Turner | Caitlin Boswell Rosie Hingston |
| Building & Grounds | Veronica Dapiran | Alan Johanson | Dean Warner | Jo Douglas |
| Function Staff | Amy Skipper Seb Hattam Manuela Frost Aaron Schultz Rachael Nolan | Jasper Brown Jeremy Taylor Anthony Aspridis Dee Wornes Jade Dorcich | Naomi Harris Lydia Wegner Tom Mitchell Sue Thomas Stephanie Taylor | Daniel Jesser Lilian Frost Claire Chapple Josh Hattam |



VOLUNTEERS

In 2013/14 4391 voluntary hours were contributed to the Montsalvat work force. Montsalvat is indebted to the following volunteers, who donate their time to provide a wide range of work and services for which we are extremely grateful:

Stella Anyaogu
 Alexia Brehas
 Christine Byrden
 Andrea Campbell
 Ed Catmull
 Ray Chaisiwamongkhon
 Ted Clohesy
 Vincent Galante
 Ivana Glogowski
 John Graty
 Su Hanna
 Robert Heritage
 David Hicks

Lindsay Holder
 Carole Houston
 Paul Hughes
 Michael Jenkin
 Jett Jennings
 Alan Johanson
 Rosie Johnston
 Tamara Koemeyer
 Therese Lapadula
 Richard Lee
 Dion Lewis
 John Martin
 Vivienne Mason

Steve McColl
 Joan McMahan
 Ken McMahan
 Trish Miller
 Vincent Pagliaro
 Josephine Prouchandy
 Michael Ridley
 Debbie Robinson
 Bob Rusling
 Michael Schokman
 Steve Seremetis
 Norma Shepherd
 Amanda Sorensen

Renee Sullivan
 Vivian Tan
 Sophie Thanassas
 Ruth Twardy
 Toni Wall
 Gail Walsh
 Jennifer Woodgate
 Carol Woodham
 Fei Wang
 Glenice Young
 Brian Zheng



Images, clockwise: Jo Douglas, Sophie Thanassas & Gail Walsh in Matcham's Kitchen; Michael Ridley leading a tour at Montsalvat Open Day; Carole Moschetti, Jo Douglas, Gail Walsh, Veronica Dapiran, Rosie Johnston & John Martin in Matcham's Kitchen; Jeannette Davison with Lewis Miller, Rick Amor Self Portrait Prize Judge.



**MONTSALVAT TRUST AND CONTROLLED ENTITIES
(TRUSTEE MONTSALVAT Ltd)**

ABN 80 726 651 249

PROFIT AND LOSS STATEMENT YEAR ENDING 30 JUNE 2014

| | 2014 |
|--|-----------|
| SALES | \$ |
| Cafe | 173,192 |
| Functions | 772,303 |
| The Arts | 95,678 |
| Tourism & education | 184,674 |
| Rent received | 103,214 |
| | 1,329,061 |
| LESS: COST OF GOODS SOLD | |
| Cafe / functions | 148,750 |
| The Arts | 52,253 |
| Tourism & education | 2,333 |
| | 203,336 |
| GROSS PROFIT FROM TRADING | 1,125,725 |
| OTHER INCOME | |
| Interest received | 243 |
| Donations | 110,206 |
| Arts Victoria funding | - |
| Other funding | 36,733 |
| Other income | - |
| | 147,182 |
| | 1,272,907 |
| EXPENSES | |
| Administration expenses | 5,580 |
| Advertising expenses | 10,507 |
| Cleaning, laundry & dry-cleaning | 32,826 |
| Consultancy fees | 100,304 |
| Depreciation | 24,579 |
| Employee expenses | 782,959 |
| Finance expenses | 40,409 |
| Insurance | 66,107 |
| Occupancy expenses | 71,635 |
| Other expenses | 23,513 |
| Professional fees | 54,272 |
| Repairs & maintenance | 41,523 |
| Small equipment & consumables | 4,297 |
| Stationery & Printing | 13,023 |
| | 1,271,534 |
| Operating Profit (Loss) before abnormal items | 1,373 |
| Abnormal items | |
| Profit (Loss) after Abnormal Items | 1,373 |

MONTSALVAT TRUST AND CONTROLLED ENTITIES
(TRUSTEE: MONTSALVAT LTD)
A.B.N. 80 726 651 249

BALANCE SHEET
AS AT 30 JUNE 2014

| | 2014 | 2013 |
|---|------------------|------------------|
| | \$ | \$ |
| SHARE CAPITAL AND RESERVES/TRUST FUNDS | | |
| 100 Fully Paid Ordinary Shares of \$1 | - | - |
| Trust corpus | 109,205 | 109,205 |
| Reserves | 8,377,505 | 8,377,505 |
| Retained earnings (Accumulated Losses) | (339,840) | (341,213) |
| TOTAL SHARE CAPITAL AND RESERVES | 8,146,870 | 8,145,497 |
| Represented by: | | |
| CURRENT ASSETS | | |
| Cash and cash equivalents | 107,622 | 103,331 |
| Trade and other receivables | 55,140 | 120,065 |
| Inventories | 17,243 | 20,857 |
| Other current assets | 37,263 | 50,575 |
| TOTAL CURRENT ASSETS | 217,268 | 294,828 |
| NON CURRENT ASSETS | | |
| Fixed Assets | | |
| Property, plant and equipment | 4,499,956 | 4,471,211 |
| Antiques and artwork | 4,308,171 | 4,308,171 |
| | 8,808,127 | 8,779,382 |
| TOTAL NON CURRENT ASSETS | 8,808,127 | 8,779,382 |
| TOTAL ASSETS | 9,025,395 | 9,074,210 |
| CURRENT LIABILITIES | | |
| Trade and other payables | 176,374 | 212,526 |
| Employee entitlements | 23,605 | 25,136 |
| Income received in advance | 102,063 | 107,950 |
| Government grants received in advance | - | - |
| TOTAL CURRENT LIABILITIES | 302,042 | 345,612 |
| NON CURRENT LIABILITIES | | |
| Employee entitlements | 121,483 | 108,101 |
| Borrowing | 455,000 | 475,000 |
| Australian Securities Limited Mortgage | - | - |
| TOTAL NON CURRENT LIABILITIES | 576,483 | 583,101 |
| TOTAL LIABILITIES | 878,525 | 928,713 |
| NET ASSETS | 8,146,870 | 8,145,497 |

Montsalvat