

Montsalvat

2012

2013

Annual Report



Contents

- 2** Mission
- 3** Chair's Report
- 7** CEO's Report
- 9** Cultural Operations
- 11** Onsite Arts Tradition
- 13** Heritage, Community & Tourism Operation
- 14** Development
 - Montsalvat Foundation
 - Montsalvat Partnerships
- 16** Governance
 - Board
 - Patron
 - Arts Advisory Board
- 18** Staff & Volunteers
- 20** Financial Statements



Yarn bombing: Margaret Summerton & Robina Summers
Image: Kerry Cross

Mission



Montsalvat's mission is to continue to be a “living, thriving, creative artistic community. Welcoming to the general public, we aim to educate and promote local, national and international cultural practice.”



Chair's Report

THE BOARD

Succession plans met

In 2012 the Montsalvat Board elected two new directors, Mr Peter Moore and Professor John Wiltshire, bringing the Board to its full strength of nine members. Both new directors bring to Montsalvat a wealth of experience and relevant expertise.

Peter Moore holds an MA in Engineering from Cambridge University, a postgraduate qualification Accounting and Finance, and a Diploma in Advanced Manufacturing technologies. He is currently Director of Flyford Communications. Prior to that he led Accenture's Management Consulting practice for Resources Industries in Asia Pacific. He is an expert in guiding companies towards projects that improve their business performance.

After joining the Board Mr Moore immediately embarked, with the CEO, upon marketing research and planning, and the development of fundraising and philanthropy programs. He is also playing an active part in developing new arts enterprises at Montsalvat, with a focus upon ceramics.

John Wiltshire, also educated at Cambridge, was president of his college (Downing) and also of two University Literary societies. After graduating, he took a lectureship at the University of Sydney. In 1968 he moved to Melbourne, and a position at La Trobe University. In 2005 he was awarded a personal chair.

Professor Wiltshire lives in Eltham and has had a close association with Montsalvat for many years, acting as a tour guide, and being involved in art classes. He brings to the Montsalvat Board a distinguished publishing history, a wealth of experience in literature and in arts administration, and a commitment to preserving, enlivening and bringing to the public Montsalvat's rich architectural, artistic and social history.

The appointment of Mr Moore and Professor Wiltshire follows Montsalvat's practice of nominating and appointing new people with demonstrated wisdom, commitment, experience and skills to complement the range already available to the Board and the Montsalvat community. Montsalvat also values continuity, so we have been very grateful for the continued support and involvement, as a perpetual patron, of our former Board member, Dr Barry Jones AO.

The Chair takes this opportunity to thank the members of the Board for their whole-hearted involvement with Montsalvat, for their frankness, for giving so freely of their time and sharing their professional expertise with the CEO and the Chair. Together we have been able to broaden the scope of Montsalvat and help ensure its future.

Board meetings

In 2012-2013 Montsalvat has continued its practice of holding five Board meetings over the course of the year, with an Annual General Meeting in October. Some Board business is conducted electronically between meetings, as the need arises. The Chair is grateful to those Board members who have made themselves available by phone from all corners of the globe in order to discuss and resolve Montsalvat matters.

COMMITTEES

The work of Board Committees has expanded in 2012-2013 to meet the work demands of new Montsalvat programs and governance issues. All committees follow formal terms of reference, approved by the Board, and their chairs report regularly to the Board.

Governance Committee

In 2012-2013 the Governance Committee (Morag Fraser, chair, Catherine Dale, John Howie) settled some longstanding internal financial commitments, opening the way for the newly enlarged Fundraising Committee to begin work in earnest, confident in the knowledge that all monies raised would be used for Montsalvat's direct benefit.

The Governance Committee has negotiated internal position descriptions and overseen the nomination and election of two new Board members (in 2012). The Committee also works to keep the Board abreast of twenty-first-century governance theory and practice. To that end it invited Mr Tony Lang, Melbourne barrister and governance expert, to speak to the Board at its February 2013 meeting. Mr Lang addressed issues ranging from the Board's objects and its statutory and common law duties, to the questions of conflict of interest. He also provided examples of current best-practice models of governance for not-for-profit organisations, one of which the Committee is currently adapting for Montsalvat's use as part of an ongoing revision and improvement of the Montsalvat governance manual.

Fundraising Committee

Mr Peter Moore joined the Fundraising Committee early in 2012 and took over from Morag Fraser as chair in July 2013. Other members are Catherine Dale, Morag Fraser, Johan Howie and Barbara van Ernst.

Also in early 2012, Mr Christopher Menz, former Director of the Art Gallery of South Australia, joined Montsalvat and the Fundraising committee as a consultant. He has since guided the successful launch of Montsalvat's Patrons Program (in June 2013), and initiated a number of grant applications.

The chair thanks Mr Menz, Professor van Ernst and the Board Committee members for driving a successful first year of fundraising and for the insights they have provided into philanthropic giving generally. There is community and Government consensus that philanthropy will be increasingly

important for institutions like Montsalvat, and the Fundraising Committee is focused on exploring all opportunities. It has also undertaken responsibility for developing the Friends of Montsalvat Program, in liaison with the CEO and staff.

The Finance Committee

Members are Catherine Dale, Peter Moore, and Max Jörgensen. They meet regularly with the CEO, both in person and electronically, to advise the CEO, scrutinise Montsalvat's financial reports and guide its long-term financial strategy.

THE ART OF SUSTAINABILITY & RISK MANAGEMENT

Sustainability at Montsalvat, and its natural partner, risk management, have been an ongoing preoccupation and the preserve of the CEO, Mr Rob Hauser. Under his management Montsalvat has become a very much safer, environmentally sound and responsible place, with fire alarms comprehensively in place, dangerous substances removed, material recycled and imaginatively reused - in line with a grand Montsalvat tradition. With the CEO's encouragement, Montsalvat artists, staff and friends have also taken up the challenges of sustainability and safety with flair and enthusiasm - witness the preservation and renewal of the studios created by one of Montsalvat's founders, Matcham Skipper, and the emergence of new gardens that use magnificent metal remnants and machines as their sculptural underpinnings. This is an inspiring work in progress, and one for which the chair, on the Board's behalf, thanks the CEO and all the staff and artists involved.

MONTSALVAT'S ARTS PROGRAMS

In 2012, Montsalvat appointed a new Artistic Manager, Jeannette Davidson, following the resignation of Naretha Williams, whose health prevented her from continuing the splendid work she had begun at Montsalvat.

Jeannette Davison brings long experience, great flair in program design and promotion, and extraordinary commitment to her new role. She inherited a healthy exhibition schedule, and many regular programs, but since beginning - at the deep end - in late 2012, she has greatly expanded and refined Montsalvat's cultural and community programs and sharpened the focus upon arts education - the core of Montsalvat's reason for being.

Under Jeannette's management, new connections have been forged with schools in the area bringing students and their teachers into Montsalvat's grounds and buildings to make art. She has overseen the rapid development of Montsalvat's commitment to the exhibition and promotion of ceramic art - its making, exhibition and sale. She has been instrumental in the establishment of a shop through which Montsalvat artists can sell and promote their work. She has brought new artists, musicians, writers, photographers and filmmakers to Montsalvat, and she guides our artist-in-residence program.

Jeannette has reinforced valuable institutional connection with Universities, (for curatorial and archiving work), with the Nillumbik Council, with local and regional galleries and artists. She has also established personal connections with the many artists who live and work in our region and with a wonderful squad of volunteers, some of whom now act as volunteer docents for our exhibitions. Jeannette is a crucible of new ideas and old-fashioned passion for art. The Board thanks her for her impeccable planning and unbridled commitment.

PHILANTHROPY AT HOME

Again, a number of Montsalvat's major exhibitions in 2012 and 2013 have been made possible through the generous support of individual donors and patrons, and through the efforts of curators who have been indefatigable in their professional support of Montsalvat. We regard them as essential members of our community and thank them accordingly.

IN MEMORIAM

In July 2013 Montsalvat lost a great friend and supporter, Jan Willingham. Jan, the beloved wife of Montsalvat director Allan Willingham, and a famed Melbourne restaurateur, had given Montsalvat invaluable advice about the management of our restaurant. She was admired by all who met her, and her life was fitly celebrated at a memorial service in Montsalvat's Upper Gallery. The Board offers Allan and his family our deepest sympathies and ongoing support.

CELEBRATIONS

In February 2013, the Montsalvat community celebrated Sigmund Jørgensen's receipt of the Medal of the Order of Australia. Sigmund is a member of the Board and former Director of Montsalvat. Family and friends joined him in Montsalvat's restaurant courtyard to congratulate him and to raise a glass in his honour.

In March, on the first anniversary of her death, Gwen Ford, Eltham institution, writer and gardener, was remembered and celebrated by friends in the same courtyard - a place to which she had devoted many hours, planting, sweeping, nurturing and working alongside Montsalvat's Sue Thomas. The courtyard was formally named in Gwen's honour, and a metal sculpture, wrought by Gwen's friend, Jacki Staude, was installed by Macgregor Knox and Jacki's partner Alistair Knox.



INSTITUTIONAL ASSOCIATIONS & COMMUNITY ACTIVITIES

Throughout 2012-2013 Montsalvat has continued to extend and cement connections with governments, federal, state and local. Our relationship with Nillumbik Council has its annual culmination in the Nillumbik Prize, which supports local artists and attracts visitors from Victoria and interstate. From 2013 on, the connection will extend into the presentation of literary festivals underwritten by Nillumbik Council. Montsalvat has also kept up productive exchange with our neighbour, the Eltham Cemetery Trust, and through Arts Manager Jeannette Davison, Montsalvat has made further connections with local schools, tertiary institutions and community groups. Jeannette has planned other large community events, including a Montsalvat Open Day in Spring 2013.

The success of the 2012 winter solstice bonfire as a community and family event was repeated in 2013, with more than 1500 people dancing around the great fire and the local fire brigades out in enthusiastic force. Again, their services, while greatly appreciated, were not required.

CONCLUSION

Montsalvat's beauty and extraordinary history are there for all to enjoy. The commitment of the Board is to make both available to the broadest possible public while at the same time keeping an eye on quality - making, exhibiting and teaching the very best of art in all its forms. On behalf of the Board I sincerely thank all who have aided us in this endeavour.

I also thank Montsalvat's CEO, Mr Rob Hauser, for his prudent and successful stewardship, over five years, of Montsalvat's financial resources, for the integrity of his leadership, his

“Montsalvat’s beauty and extraordinary history are there for all to enjoy”

strategic vision, exemplary generosity and fairness, and for the passion and energy he has devoted to conserving and enhancing Montsalvat's unique environment.

The CEO's leadership is reflected in the great lengths to which Montsalvat's dedicated and highly skilled staff go to achieve the vision that the CEO and Board have for Montsalvat. The staff work all hours, often in challenging circumstances (Melbourne's weather is not always kind). They are loyal, resourceful and inventive way beyond the call of duty. We are in their debt, and I thank them all.

Morag Fraser
Chair, Montsalvat Ltd





CEO's Report

2012/2013 was a very successful and significant year for Montsalvat on many levels, particularly financially, artistically and strategically.

Financially, Montsalvat Ltd made a profit for the sixth consecutive year. Montsalvat has now operated profitably every year since the formation of Montsalvat Ltd, with its independent Board, in 2006. All profits generated are used to benefit Montsalvat directly, particularly through capital works.

Artistically, Montsalvat achieved its mission of being a living, thriving, creative artistic community through the provision of an extensive arts program comprised of high quality exhibitions, concerts, artist talks and literary events. It also fostered the arts practice of jewellers, painters, violin, guitar and shakuhachi flute makers, glass sculptors, ceramic artists, musicians and film makers. The artistic community is comprised of a large number of artists who variously practice at Montsalvat, visit as artists in residence or exhibit and perform at Montsalvat.

Montsalvat's mission was also achieved through the planning and establishment of additional arts education opportunities. Jeannette Dyke established a jewellery school. Susan Reddrop and Ruth McCallum Howell commence the huge task of establishing a glass studio in the Foundry and Modelling Studio. And in association with Anna Maas from Skepsi Gallery, planning for a ceramics hub (which will include a ceramics teaching space) was commenced.

Montsalvat was very fortunate to have Jeannette Davison commence as its new Arts Manager following the resignation of Naretha Williams in October 2012 for health reasons. Jeannette has built very strong relationships within the Montsalvat arts

community and has a strong focus on enhancing the profile of Montsalvat as a place where art is made, created, exhibited, performed and taught. My thanks go to Naretha for the excellent work she did whilst at Montsalvat.

Strategically, the Board made a number of very significant decisions that will have long lasting implications for Montsalvat's ongoing success. These decisions included the adoption of a Risk Management Action Plan, commencement of a review of Montsalvat's Marketing Strategy, the decision to award a contract for the provision of cafe and restaurant services, and the launch of the Montsalvat Patrons Program and fundraising initiatives.

Montsalvat's achievements during the year could not have occurred without the support of many people. In particular I thank the following:

Mez Woodward for her astute and meticulous work on the Risk Management Plan and cafe and restaurant tender process.

Ben Liu from Minter Ellison for his pro bono and invaluable work in preparing the cafe and restaurant agreements.

“Montsalvat achieved its mission of being a living, thriving, creative artistic community”

I also pay tribute to Jan Willingham who generously volunteered her time to assist Montsalvat with the cafe and restaurant tender evaluation. Very sadly Jan passed away 4 July 2013. Jan was the very loved wife of Montsalvat Board member Allan Willingham and the thoughts of all at Montsalvat are with Allan and his family.

Board member Peter Moore's involvement and support for the Marketing Strategy Review and development of the Ceramic Hub project with Anna Maas from Skepsi Gallery has been invaluable.

Christopher Menz has undertaken excellent work supporting the Fundraising Committee with development plans, grant applications and the successful launch of the Patrons Program.

I would like to thank all Board members, particularly the Board Chair Morag Fraser, for their commitment to Montsalvat during the year. Morag Fraser has been Chair of Montsalvat since the formation of Montsalvat Ltd in 2006 and her outstanding leadership has been central to its success.

Special thanks also go to the staff of Montsalvat who do an outstanding job with limited resources, to the volunteers who support Montsalvat in many ways, and to the artists who live, work and teach at Montsalvat. All of them help ensure that Montsalvat continues to be a creative artistic community.

Rob Hauser

CEO, Montsalvat Ltd





Cultural Operations

EXHIBITIONS

Barn Gallery

Nillumbik Prize

Thomas Lloyd Guitars
Beyond the Trees

Anna Maas
Engaging Form

Hong Fu

Watercolour Society of Australia
Kenneth Jack Award

Justus Jørgensen

Jenny Reddin
Naturally Occuring

Alexandra & Leigh Copeland
Rugs & Ceramics

Robyn Latham
Latham

Anna Maas
Harmony of Difference

Ruth Marshall
Vanished into Stitches

Long Gallery

Barbara Hauser
People

Neami Splash
Eclectic

Jerry Zabenko
Eclectic

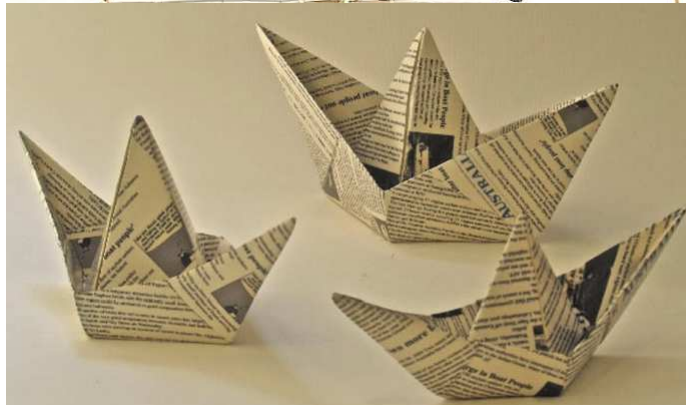
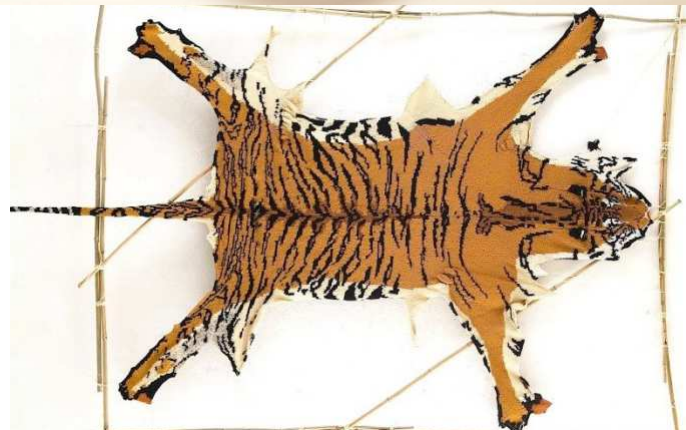
Watercolour Society of Australia
Kenneth Jack Award

Norma Neil & Maree Castles
Two of a Kind

Karl Sietin
Long Gone Days on the Farm

Paul Bottaro
Paper Tales

Nerina Lascelles
Japonism



Image, top to bottom: Dale Cox, *ghost*; Ruth Marshall, *Berlin Zoo - Male Tiger*; Alexandra & Leigh Copland, *Afghan Rug*.

CONCERTS

Eltham College x 2

Speak Percussion

Andrea Keller

Marianne Rothschild
Quartet for the End of Time

Toolangi Benefit Concert

Matthew Fagan
Chamber Music Special

Tony Gould & Peter Petrucchi
The Journey Home

Sandhill Music School

A. J. Leonard
Australian Songbook

Eltham North Primary School

Taliska

Ted Vining Trio

Julia Messenger

Jeremy Woolhouse
The Persistence of Dreaming

Seraphim Trio

Choral Festival

Flinders Quartet x 3

Tarkine Concert

Simon Charles x 3

LITERARY EVENTS

Past Matters Festival

World Matters Festival

Robert Hillman
Gurumul

Dr Vandana
Making Peace with the Earth

David Day
Antarctica

Matthew Field

Gideon Haigh

Brian Ellis

Jennifer Isaacs

Don Charlwood

Nicholas Rothwell
Belamor

Robert Gott

James Button
Speechless





Onsite Arts Tradition

Since its beginning in the 1930's, Montsalvat has been a place where art is made. It continues to provide studio space for artists from a diverse range of arts practice. Over the last twelve months, two additional workshops - in jewellery making and glassmaking - have been developed. The existing painting school and guitar making studio continue to attract strong student numbers. There is a developing emphasis on ceramics, instrument making, jewellery making, painting and glassmaking among our studio artists.

Existing Artists

| | |
|----------------------|---------------------------------|
| David Moore | Painter & Teacher |
| Susan Reddrop | Glass Sculptor |
| Sue Thomas | Couturier |
| Simon Icarus Baigent | Goldsmith |
| Don James | Painter & Teacher |
| David Brown | Violin & Shakuhachi Flute Maker |
| Sigmund Jörgensen | Arts & Heritage Advisor |
| Richard Nelson | Film Maker |
| Amy Skipper | Couturier |
| Chris Wynne | Guitar Maker & Teacher |
| Tim Clarkson | Ceramic Artist |
| Simon Charles | Musician |
| Jeanette Dyke | Jeweller |
| Sandy Kilpatrick | Jeweller |
| Ruth McCallum Howell | Glass Artist |
| Mariella McKinley | Glass Sculptor |

| | |
|---|--------------------------------|
| Carole Moschetti | Painter |
| Sophie Thanassas | Garden Design & Ceramic Artist |
| August Skipper (Emerging Artist Residency) | Musician |
| Anthony Williams | Painter |

Artists Appointed 2012/13

| | |
|-------------------|---------|
| Daniela Miszkinis | Painter |
|-------------------|---------|

Artists Vacating Studios 2012/13

| |
|------------------|
| Simon Charles |
| Sophie Thanassas |
| Anthony Williams |
| August Skipper |

Montsalvat's Artist in Residence Program has continued in 2012/2013. Participants report unique creative experiences during their stay. The magnificent setting, the peacocks, involvement with the local arts community through events such as The Red Chair Event and our literary events, provide a creative awakening that reverberates through the arts practice of participants long after the residency has concluded.

2012/2013 Artists in Residence

| | |
|--------------------------------|------------------------------|
| Julien Poulson & Chantthy They | Painter & Teacher |
| Steve Westbrook | Poet |
| Danae Natsis | Contemporary Jewellery Maker |
| Nabil Azadi | Sculptor & Photographer |
| Susan Hase | Painter |
| Mimi Kelly | Photographer |
| Lisa Nolan | Painter |



“Montsalvat was a great experience for us & this will come through in the work we’re doing so I’m very grateful to each of you & the other residents & staff who helped make our time here special.” *Julien Poulson & Chantthy They*



Heritage, Community & Tourism Operations

During 2012/2013 Montsalvat was visited by over 9,037 visitors.

Visitors came to Montsalvat to learn about its rich history and to enjoy its unique ambience. During the warmer months regular tours by our volunteer tour guides provided information about Montsalvat's history, the construction of the buildings and the stories of the many artists who contributed to its beginnings. Thousands of visitors came to view the exhibitions in the Barn Gallery, the Long Gallery and the Upper Gallery. 'Friends of Montsalvat' are regular visitors.

The Nillumbik Shire has a strong history in the arts. Artists continue to be drawn to the area, attracted by its the peace and tranquillity. For the past 60 years Montsalvat has been at the centre of that arts community. The Nillumbik Prize (open to artists who can demonstrate a local connection) is hosted and administered at Montsalvat annually. It is a symbol of the importance of Montsalvat within the local arts community. The Prize is run in partnership with the Nillumbik Shire Council. The 2012 Prize saw 256 works submitted. Of those works a total of 64 works were shortlisted. Three hundred people attended the opening of the exhibition of shortlisted work. Local, interstate and international visitors to Montsalvat enjoyed viewing the work for the duration of the exhibition.

Montsalvat's partnership with the Nillumbik Shire continues to include the Red Chair Event. Local and international presenters from a diversity of arts practice as well as arts professionals were included in the Red Chair schedule. Montsalvat hosted eight events over the twelve-month period.

Ongoing discussions (particularly in relation to their music program) has seen the continuation of a robust relationship with Eltham High School. Eltham North Primary School participated in a pilot for a school program at Montsalvat. Evaluation feedback from both students and staff at the school was very positive. Eltham North Primary School have made a commitment to assist with the development of this program to ensure that it is congruent with the current Primary School curriculum. It is hoped that schools from the local area and the larger metropolitan area will be involved in the program in the future.

NEAMI Splash Art Studio are pleased to exhibit work annually in our Long Gallery, providing a unique, sometimes life altering experience for their artists.

Montsalvat is now associated with Melbourne University, being one of the approved organisations for internships in the Master of Art Curatorship.

Montsalvat also supports an ongoing working relationship with the Eltham Bookshop to present literary events and book launches with guest presenters throughout the year.

“Visitors came to Montsalvat to learn about its rich history and enjoy its unique ambience.”



Development

MONTSALVAT FOUNDATION

The Montsalvat Foundation has established to raise funding to promote and encourage the arts at Montsalvat by way of exhibitions, public concerts, lectures, workshops and master classes.

The foundation is endorsed as a Deductible Gift Recipient; therefore we are able to issue tax receipts for any donations.

The formation of a Fundraising Committee of the Board and the establishment of the Patrons Program resulted in a significant increase in the philanthropic funds received by Montsalvat.

Private donations totalling \$37,200 were received during the year.

The Patrons Program is currently supported by the following people:

Montsalvat

gratefully acknowledges supporters of its
Patrons Program

Gallery (\$10,000 or more)

Rick Amor
Morag Fraser AM
Rob Hauser and Ruth Barr
Peter and Karen Moore
Dr Barbara van Ernst AM

Salon (\$5,000–\$9,999)

Studio (\$2,000–\$4,999)
Siobhan Jackson

Workshop (\$250–\$1,999)

Dr Anthea Hyslop
Eric Mack
Grant Sheldon
Anonymous (1)





MONTSLAVAT PARTNERSHIPS

Montsalvat's primary partnerships during 2012/13 were:

Heritage Victoria - building restoration funds

Nillumbik Shire Council - Nillumbik Prize & Red Chair Artist Talks

Eltham Bookshop - book launches, literary discussions & festivals

Splash Art Studio - exhibitions of artists who have a mental illness

Australian National Academy of Music - concerts

Flinders Quartet - concerts

Universities - ongoing relationships are maintained with University art programs through their artists taking part in prizes and exhibitions.



Top image: Daniela Miszkinis in her studio.
 Bottom left: Sarah Cole & Megan Reeve perform in the Upper Gallery.
 Bottom right: Brian Keyte, ceramics demonstration.



Governance

MONTSALVAT LIMITED BOARD

- Morag Fraser AM (Chair)** Former editor, *Eureka Street* magazine
Chair, *Australian Book Review*
- John Howie (Deputy Chair)** Special Counsel, Williams Winter Solicitors
- Phillip Adams AO** Australian broadcaster, film producer,
writer and social commentator
- Dr Catherine Dale** General Manager, Eurobodella Shire Council
Board Member, State Library of Victoria
- Max Jörgensen** Company Director, farmer and inventor/
developer of ideas
- Sigmund Jörgensen OAM** Montsalvat Board member and former director
- Peter Moore** Director, Flyford Communications
- Allan Willingham** Heritage Architect
- Dr John Wiltshire** Former Professor of English at La Trobe University

PATRON

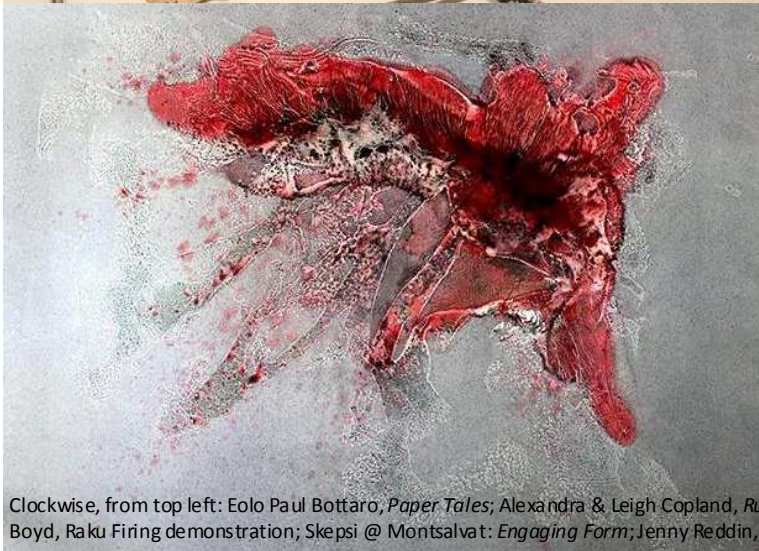
- Barry Jones AO** Professorial Fellow at the University of Melbourne
Board member of Victorian Opera



ARTS ADVISORY BOARD

The artistic direction of Montsalvat is guided by its Arts Advisory Board which is comprised of:

- Rick Amor** Artist, Winner of the 2007 McClelland Sculpture Prize
- Tony Gould** Pianist/Composer, Winner of the 2009 Don Banks Music Award from the Australia Council for the Arts
- Rodney Hall** Writer, twice Miles Franklin Winner, Former Chair of the Australia Council for the Arts
- Sigmund Jörgensen** Montsalvat Limited Board Member
- Genevieve Lacey** Recorder virtuoso and Artistic Director
- Michael Shmith** *The Age* reviewer and *Leader* writer
- Peter Wegner** Artist, Winner of the 2006 Moran Portrait Prize



Clockwise, from top left: Eolo Paul Bottaro, *Paper Tales*; Alexandra & Leigh Copland, *Rugs and Ceramics*; Kevin Boyd, Raku Firing demonstration; Skepsi @ Montsalvat: *Engaging Form*; Jenny Reddin, *Naturally Occurring*.



Staff & Volunteers

STAFF

The staff of Montsalvat are committed to supporting its creative arts community, heritage buildings and grounds.

| | |
|-------------------------|--|
| Chief Executive Officer | Rob Hauser |
| Business Consultant | Mez Woodward |
| Artistic Manager | Naretha Williams/Jeannette Davison |
| Events Manager | Vennesza Soosai |
| Functions Supervisor | Paola Luz |
| Arts Support | Sana Kojcin |
| Reception | Fiona Boyd Simonette Turner Caty Gierer |
| Building and Grounds | Veronica Dapiran Jo Douglas Dean Warner |
| Restaurant | Adam Nye/Anthony Aspridis Rob Hunter |



VOLUNTEERS

Montsalvat is indebted to the following volunteers, who donate their time to provide a wide range of work and services:

| | |
|------------------|-------------------|
| Vincent Galante | Olga Istomina |
| Ted Clohesy | Giuseppe De Corlo |
| Mike Ridley | Jen Woodgate |
| Sue Thomas | Sophie Thanassas |
| Alan Johanson | Virginia Nugent |
| Neri Adams | Louise Bush |
| Emma Adams | Rosie Johnstone |
| Bob Rusling | David Kerrigan |
| Morriss Watson | Gail Walsh |
| Denise Burbridge | Morag Fraser |
| Vivian Tan | Sigmund Jørgensen |
| Ying Tan | Rob Hauser |
| Nick Clark | Fran Cook |
| Cath Nolan | Karen Cook |
| John Martin | |

In 2012/13, volunteers contributed 1,175 hours of their time to Montsalvat.





Financial Statements

MONTSALVAT TRUST AND CONTROLLED ENTITIES
(TRUSTEE MONTSALVAT Ltd)

ABN 80 726 651 249

PROFIT AND LOSS STATEMENT YEAR ENDING 30 JUNE 2013

| | 2013 |
|--|-----------|
| SALES | \$ |
| Cafe | 582,089 |
| Functions | 1,017,048 |
| The Arts | 148,185 |
| Tourism & education | 148,961 |
| Rent received | 95,912 |
| | 1,992,195 |
| LESS: COST OF GOODS SOLD | |
| Cafe / functions | 368,166 |
| The Arts | 75,014 |
| Tourism & education | 6,154 |
| | 449,334 |
| GROSS PROFIT FROM TRADING | 1,542,861 |
| OTHER INCOME | |
| Interest received | 15 |
| Donations | (890) |
| Arts Victoria funding | - |
| Other funding | 60,573 |
| Other income | - |
| | 59,698 |
| | 1,602,559 |
| EXPENSES | |
| Administration expenses | 8,343 |
| Advertising expenses | 11,163 |
| Cleaning, laundry & dry-cleaning | 37,411 |
| Consultancy fees | 202,299 |
| Depreciation | 22,392 |
| Employee expenses | 979,441 |
| Finance expenses | 26,786 |
| Insurance | 63,976 |
| Occupancy expenses | 59,856 |
| Other expenses | 49,817 |
| Professional fees | 53,018 |
| Repairs & maintenance | 52,833 |
| Small equipment & consumables | 16,117 |
| Sub-contractors | 0 |
| | 1,583,452 |
| Operating Profit (Loss) before abnormal items | 19,107 |
| Abnormal items | |
| Employee expenses | |
| Profit (Loss) after Abnormal Items | 19,107 |

MONTSALVAT TRUST AND CONTROLLED ENTITIES
(TRUSTEE: MONTSALVAT LTD)
A.B.N. 80 726 651 249

BALANCE SHEET
AS AT 30 JUNE 2013

| | 2013 | 2012 |
|---|------------------|------------------|
| | \$ | \$ |
| SHARE CAPITAL AND RESERVES/TRUST FUNDS | | |
| 100 Fully Paid Ordinary Shares of \$1 | - | - |
| Trust corpus | 109,205 | 109,205 |
| Reserves | 8,377,505 | 8,377,505 |
| Retained earnings (Accumulated Losses) | (341,213) | (360,320) |
| TOTAL SHARE CAPITAL AND RESERVES | 8,145,497 | 8,126,390 |
| Represented by: | | |
| CURRENT ASSETS | | |
| Cash and cash equivalents | 103,331 | 102,405 |
| Trade and other receivables | 120,065 | 65,044 |
| Inventories | 20,857 | 22,705 |
| Other current assets | 50,575 | 42,286 |
| TOTAL CURRENT ASSETS | 294,828 | 232,440 |
| NON CURRENT ASSETS | | |
| Fixed Assets | | |
| Property, plant and equipment | 4,471,211 | 4,463,650 |
| Antiques and artwork | 4,308,171 | 4,308,171 |
| | 8,779,382 | 8,771,821 |
| TOTAL NON CURRENT ASSETS | 8,779,382 | 8,771,821 |
| TOTAL ASSETS | 9,074,210 | 9,004,261 |
| CURRENT LIABILITIES | | |
| Trade and other payables | 212,526 | 183,622 |
| Employee entitlements | 25,136 | 59,131 |
| Income received in advance | 107,950 | 155,265 |
| Government grants received in advance | - | - |
| TOTAL CURRENT LIABILITIES | 345,612 | 398,018 |
| NON CURRENT LIABILITIES | | |
| Employee entitlements | 108,101 | 77,853 |
| Borrowing | 475,000 | 402,000 |
| Australian Securities Limited Mortgage | - | - |
| TOTAL NON CURRENT LIABILITIES | 583,101 | 479,853 |
| TOTAL LIABILITIES | 928,713 | 877,871 |
| NET ASSETS | 8,145,497 | 8,126,390 |